

## L-ML Series



### Metal Lath Access Doors

**Doors** are designed specifically to meet the needs of plaster construction. Door has a 3" wide metal lath on all four sides for keying into plaster.

**Door and Frame** are fabricated from 16 gauge, galvanized steel.

**Hinge** is a concealed continuous piano hinge.

**Latch** is screwdriver operated.

**Finish** is a white prime coat suitable for painting.

### Guide Specification

Provide Larsen's® L-ML Series, Metal Lath access doors (specify model number and options). Access door and frame shall be fabricated from 16 gauge, galvanized steel with a white prime coat finish. Door shall have a continuous piano hinge. Latch shall be screwdriver operated. Finish shall be a white prime coat suitable for painting.



## MODEL NUMBER AND OPTIONS SELECTION

### BASE MODEL NUMBER

L-ML Metal Lath Access Door

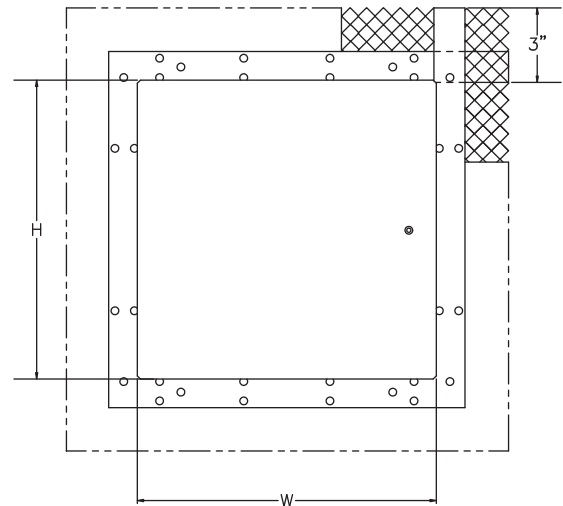
### Suffix Options

- AKL Allen Key Latch
- CL Cylinder Lock (one per door)
- CLD Cylinder Lock with Dust Shutter (one per door)
- SS Stainless Steel Construction (Type 304 No. 4 Satin Finish)

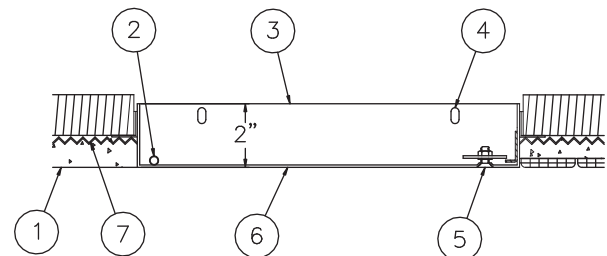
## STANDARD AVAILABLE SIZES

Special sizes available upon request.

NOMINAL DOOR SIZE (W X H)	WALL OPENING (minimum required)	LATCHES	WEIGHT
L-ML 8" x 8"	8-1/4" x 8-1/4"	1	4 lbs.
L-ML 8" x 12"	8-1/4" x 12-1/4"	1	5.5 lbs.
L-ML 10" x 10"	10-1/4" x 10-1/4"	1	5.5 lbs.
L-ML 12" x 12"	12-1/4" x 12-1/4"	1	6.5 lbs.
L-ML 12" x 16"	12-1/4" x 16-1/4"	1	9 lbs.
L-ML 12" x 18"	12-1/4" x 18-1/4"	1	10 lbs.
L-ML 12" x 24"	12-1/4" x 24-1/4"	2	11.5 lbs.
L-ML 14" x 14"	14-1/4" x 14-1/4"	2	8 lbs.
L-ML 16" x 16"	16-1/4" x 16-1/4"	2	11 lbs.
L-ML 16" x 20"	16-1/4" x 20-1/4"	3	12.5 lbs.
L-ML 18" x 18"	18-1/4" x 18-1/4"	3	13 lbs.
L-ML 18" x 24"	18-1/4" x 24-1/4"	5	20 lbs.
L-ML 20" x 24"	20-1/4" x 24-1/4"	5	22 lbs.
L-ML 20" x 30"	20-1/4" x 30-1/4"	5	23.5 lbs.
L-ML 24" x 24"	24-1/4" x 24-1/4"	3	21 lbs.
L-ML 24" x 30"	24-1/4" x 30-1/4"	5	24.5 lbs.
L-ML 24" x 36"	24-1/4" x 36-1/4"	6	29.5 lbs.
L-ML 30" x 30"	30-1/4" x 30-1/4"	7	25.5 lbs.
L-ML 36" x 36"	36-1/4" x 36-1/4"	8	28 lbs.



**FRONT VIEW**



**SIDE VIEW**

### NOTES:

1. FINISH LINE, PLASTER OVER MASONRY
2. CONCEALED PIANO HINGE
3. FRAME
4. MOUNTING HOLES
5. SCREWDRIVER OPERATED LATCH
6. DOOR
7. METAL LATH

**WARNING:** Cancer and Reproductive Harm - [www.P65Warnings.ca.gov](http://www.P65Warnings.ca.gov)

Call Larsen's Manufacturing Co. for current listings and approvals. Dimensions are subject to manufacturer's tolerance and may change without notice. Larsen's assumes no responsibility for use of void or superseded data. © Copyright Larsen's Manufacturing Co.®, Member of Morris Group International® Please visit [www.larsensmfg.com](http://www.larsensmfg.com) for most current specifications.

### SELECTION SUMMARY & APPROVAL FOR MANUFACTURING

Model Number & Options _____	Quantity _____
Company _____	Date _____
Contact _____	Title _____
Approval for Manufacturing/Signature _____	

**L-ML**

Revised: 04/15/2019