

L-HF Series



MEMBER OF

MORRIS GROUP
INTERNATIONAL*

Hidden Flange Access Doors

Hidden Flange Access Doors are ideally suited for new installations or for remodeling in masonry, tile, wood or other wall and ceiling surfaces. The design avoids the additional labor to mud or plaster the flange due to it being hidden behind the door. The beveled edges and concealed door frame provide an appearance that allows the unit to blend into the wall better than other doors where the door frame is readily apparent.

Door and Frame are fabricated from 16 gauge, galvanized steel with a prime coat finish.

Hinge is fully concealed and mounted on the long side of the rectangular door panel.

Latch is screwdriver operated cam latch.

Guide Specification

Provide Larsen's® L-HF Series, Hidden Flange Access Doors (Specify model number and options). Access door and frame shall be fabricated from 16 gauge galvanized steel with a prime coat finish. Doors to have concealed pantograph hinges. Latch shall be screwdriver operated cam latch.



Member of U.S. Green
Building Council

L-HF

Revised: 04/15/2019

Recyclable
Product



MODEL NUMBER AND OPTIONS SELECTION

BASE MODEL NUMBER

L-HF Hidden Flange Access Door

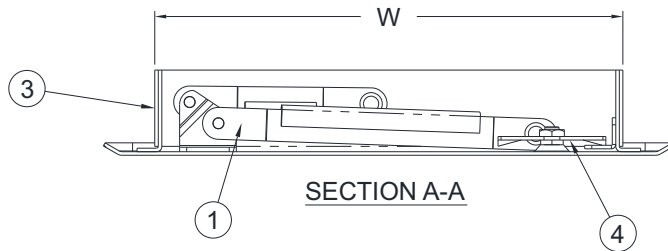
Suffix Options

- AKL Allen Key Latch
- CL Cylinder Lock (one per door)
- CLD Cylinder Lock with Dust Shutter (one per door)

STANDARD AVAILABLE SIZES

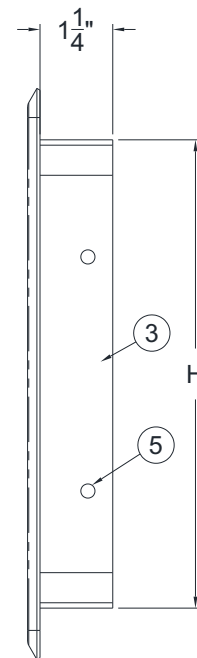
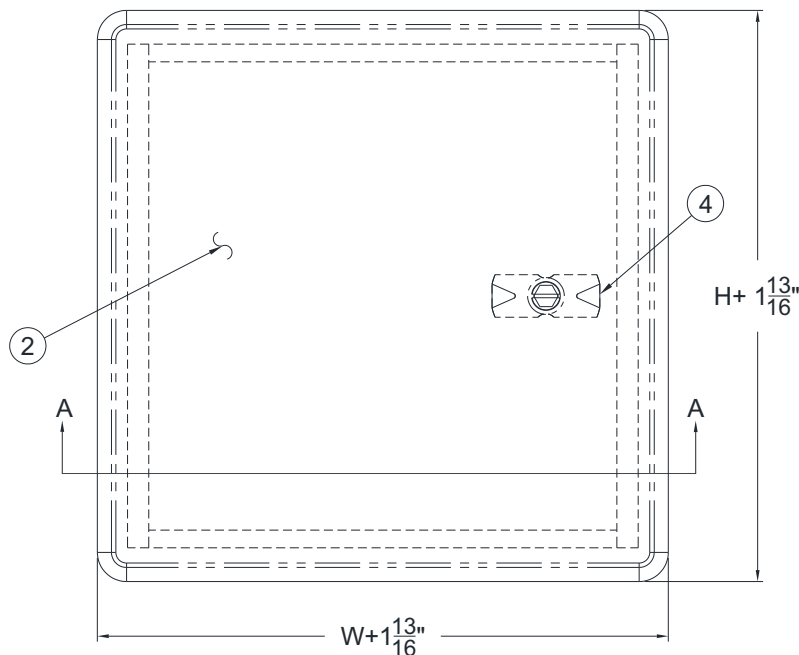
Special sizes available upon request.

FRAME SIZE (W x H) INCHES (mm)	WALL OPENING INCHES (mm)	LATCHES	WEIGHT lbs (kg)
L-HF 8-1/4" x 8-1/4" (210 x 210)	8-1/2" x 8-1/2" (216 x 216)	1	3 (1.36)
L-HF 12" x 12" (305 x 305)	12-1/4" x 12-1/4" (312 x 312)	1	6 (2.72)
L-HF 16" x 16" (406 x 406)	16-1/4" x 16-1/4" (413 x 413)	1	9 (4.08)
L-HF 18" x 18" (457 x 457)	18-1/4" x 18-1/4" (464 x 464)	3	10 (4.54)
L-HF 24" x 24" (610 x 610)	24-1/4" x 24-1/4" (616 x 616)	4	17 (7.71)



NOTES:

1. PANTOGRAPH HINGE
2. DOOR
3. FRAME
4. SCREWDRIVER OPERATED LATCH
5. MOUNTING HOLES



WARNING: Cancer and Reproductive Harm - www.P65Warnings.ca.gov

Call Larsen's Manufacturing Co. for current listings and approvals. Dimensions are subject to manufacturer's tolerance and may change without notice. Larsen's assumes no responsibility for use of void or superseded data. © Copyright Larsen's Manufacturing Co.®, Member of Morris Group International® Please visit www.larsensmfg.com for most current specifications.

SELECTION SUMMARY & APPROVAL FOR MANUFACTURING

Model Number & Options _____ Quantity _____
 Company _____ Date _____
 Contact _____ Title _____
 Approval for Manufacturing/Signature _____

L-HF

Revised: 04/15/2019